



An Introduction

February 2023



Course Outline

- **Introduction**
- **Sharing**
- **Tracking**
- **Markers**
- **Layers**
- **Downloading Layers**
- **Map Sheets**
- **Practice Maps**

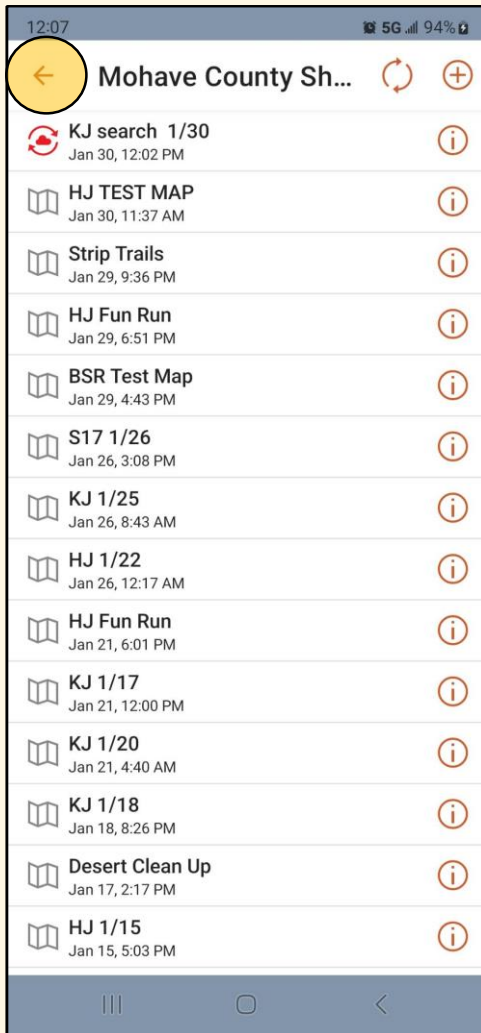


What is SARTopo?

- It is the search and rescue version of CALTopo
- CALTopo is a map-based application
 - Allows offline access to map data
 - Integrates real-time data
 - Allows for map customization using layers and markers
- Individual and Team Accounts
 - Requires an account
 - Requires association to a team
 - Create personal maps and access to team maps
- Mohave County SAR primary map application



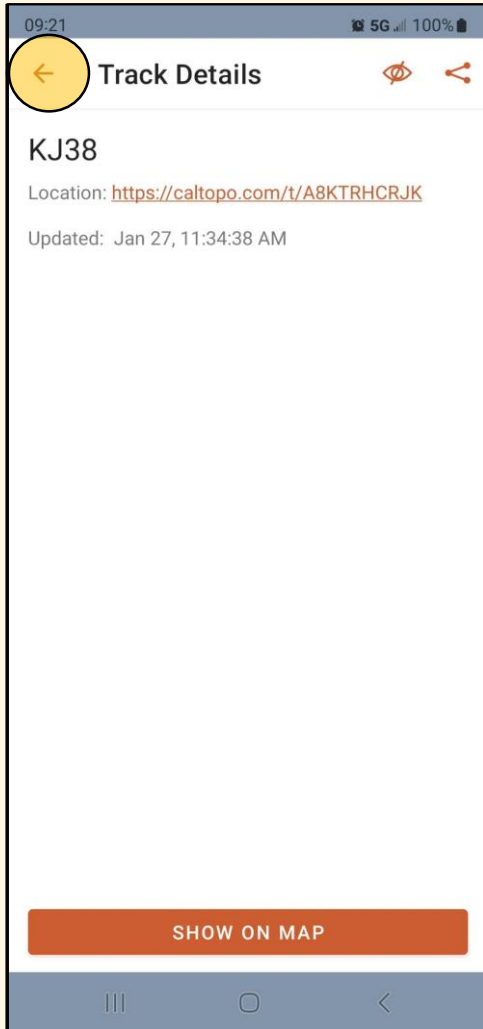
Maps



- Your Maps
 - Only you can see
 - Can share to others using a “bookmark”
- Team Maps
 - Only those on the team can see
- May need to refresh the list for new maps



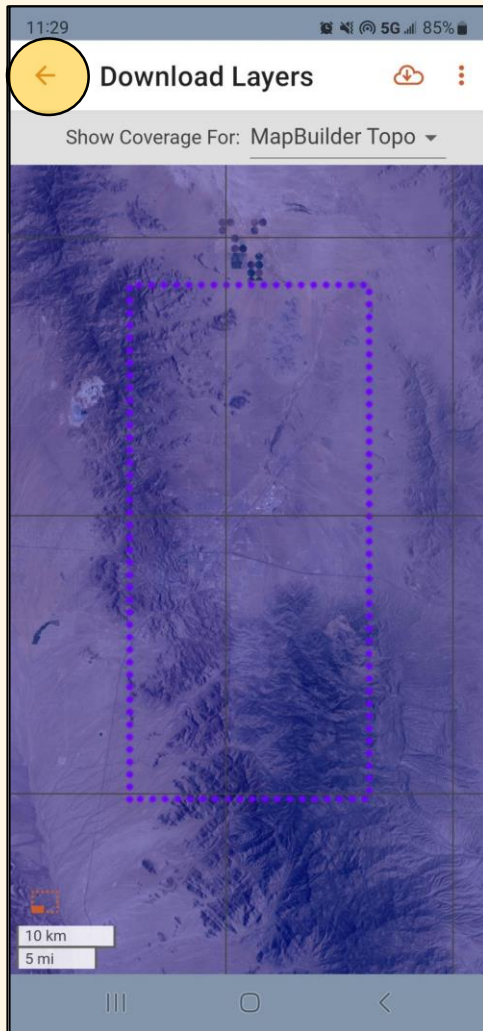
Tracks



- Saved tracks
- Can turn on any map
- Can “share”



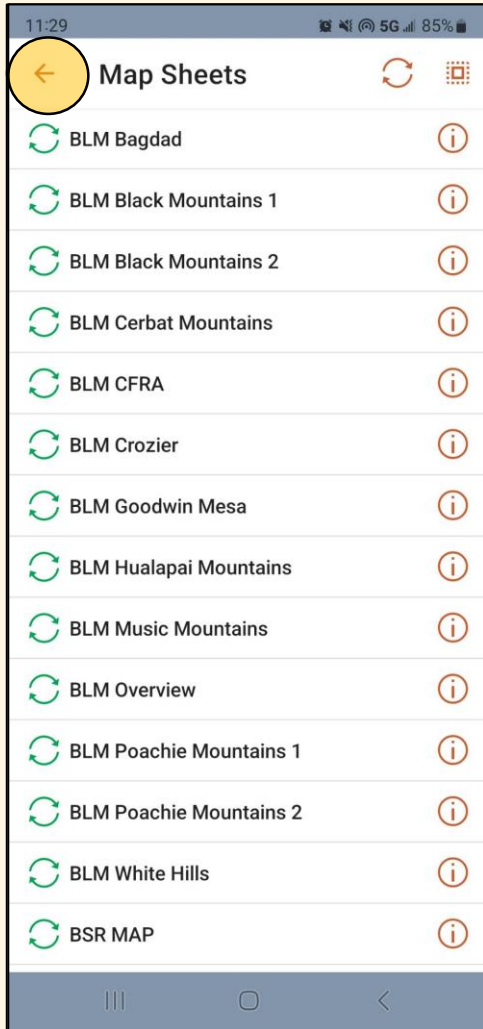
Download Layers



- Works offline when you have no cellular service
- Different levels of quality available to download, but recommend “maximum”



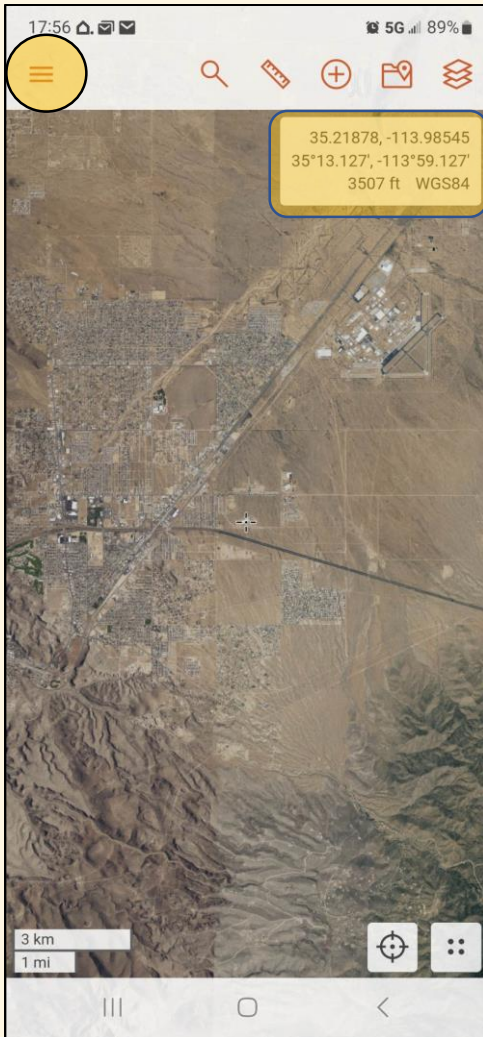
Map Sheets



- Works offline when you have no cellular service
- Very useful



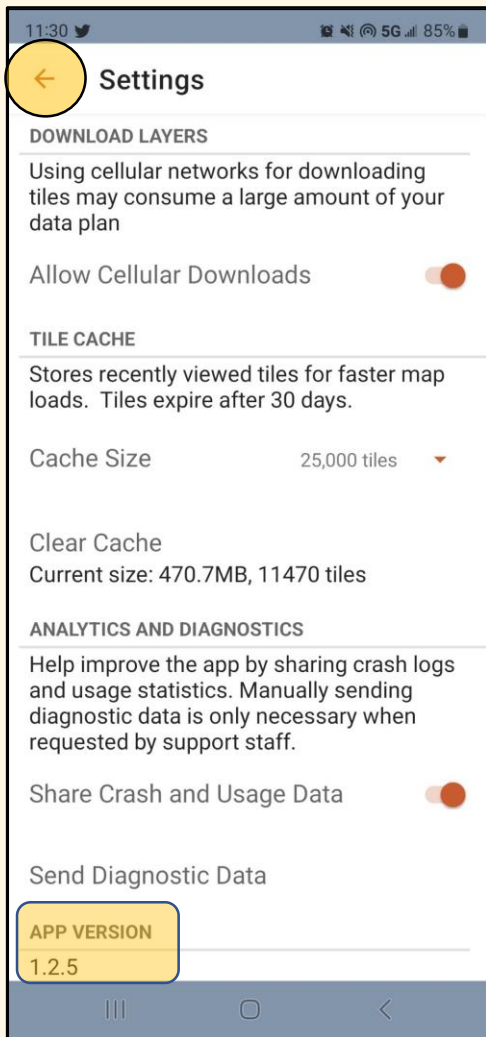
Display Options



- Light / dark modes
- Turn on /off labels
- Set coordinate formats



Settings



- Record Track Detail “Highest”
- Allow cellular downloads (On)
- Increase cache size to 25,000 tiles
- App Version should be 1.2.5



Account Details

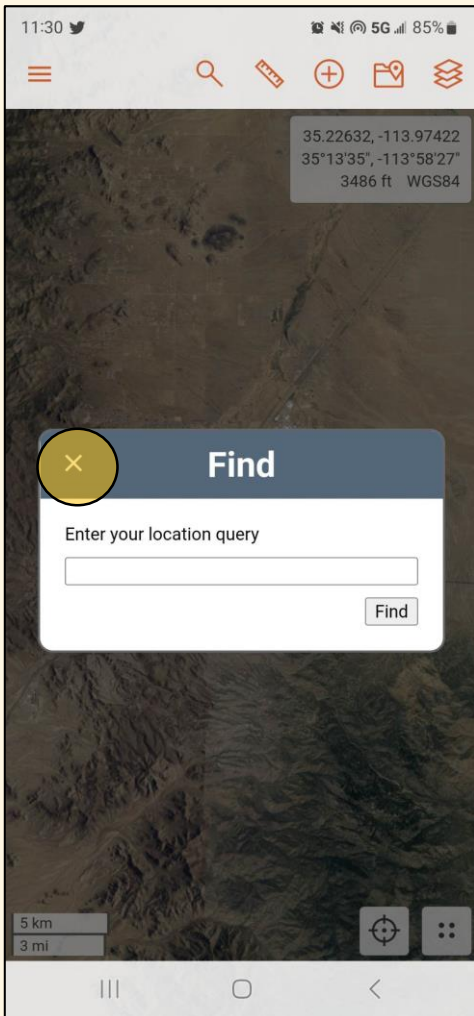


- Delete account
- Sync Account
- Log out



Find

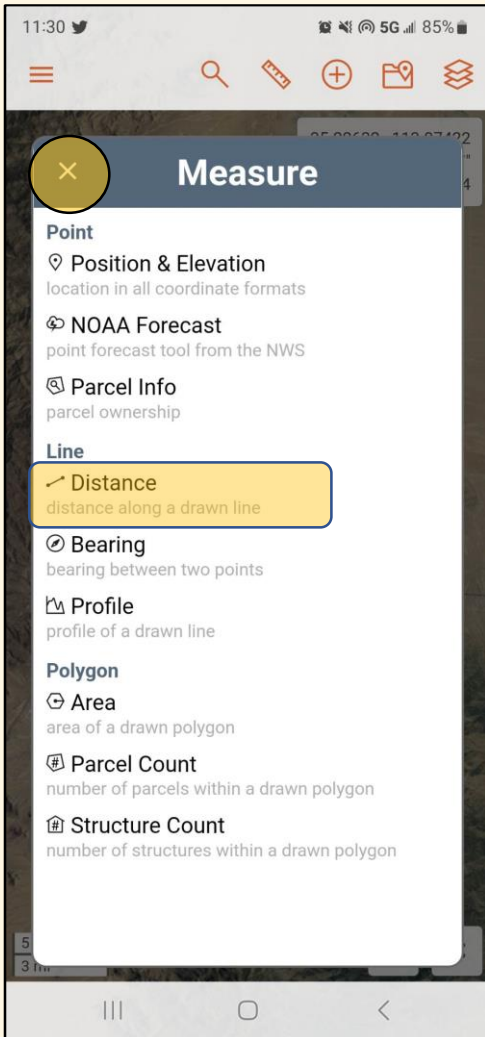
- Coordinates
- Addresses
- Not 100% correct all the time





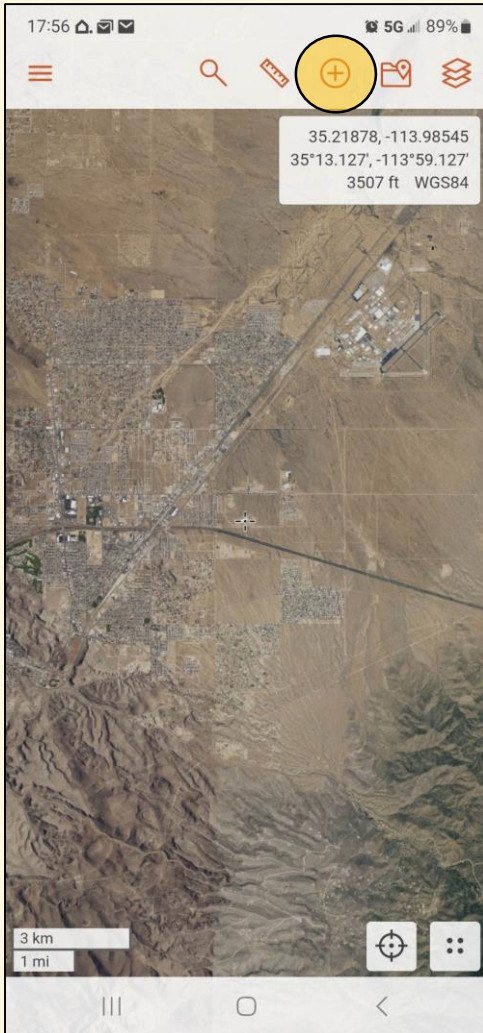
Measuring

- Most common use is measuring distance
- Take some practice to figure these tools out





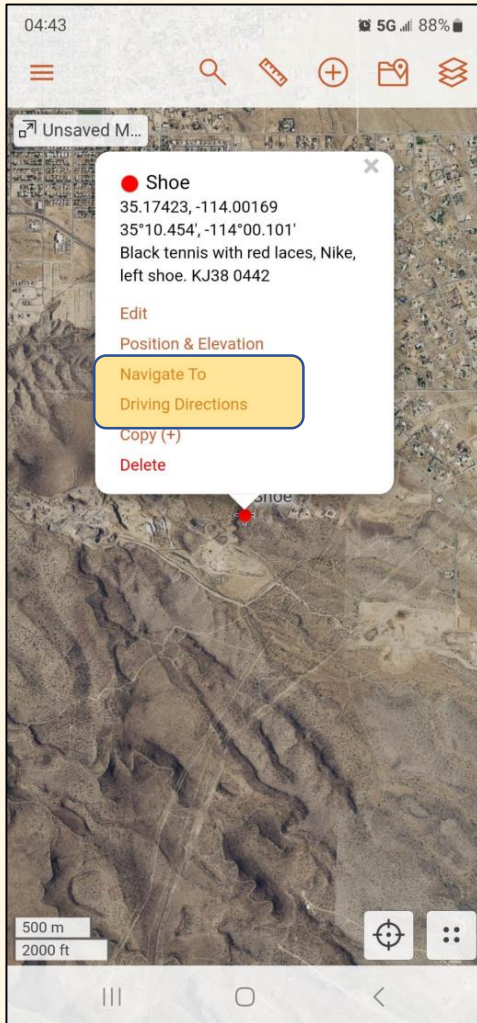
Markers



- Don't "clutter" the map
- Used to mark many things during a search:
 - CP
 - Clues
 - Hazards
 - Navigational Aids



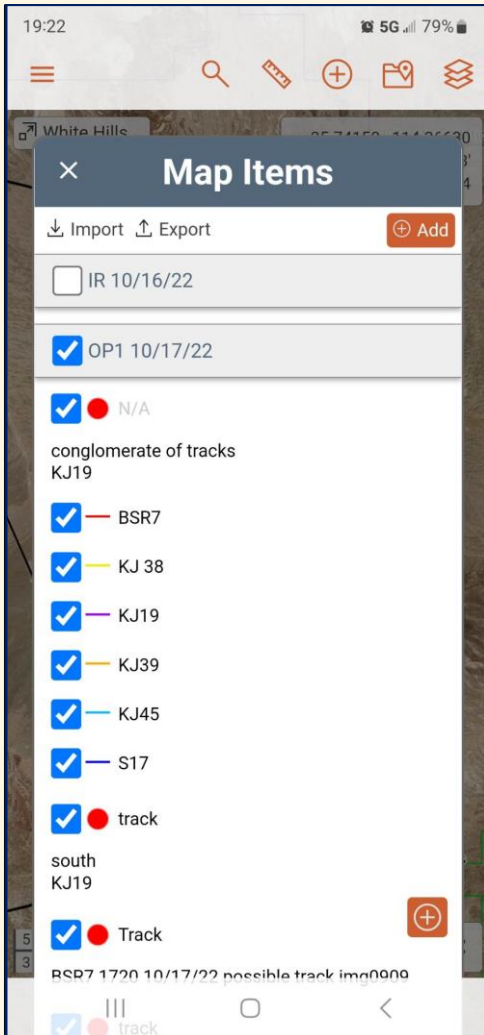
“Navigate” to or “Directions”



- Do not use the “Navigate to” or “Driving Directions” features in SARTopo
- Most of the time, this is how the person we are looking for became lost or stuck
- It is only as good as the data



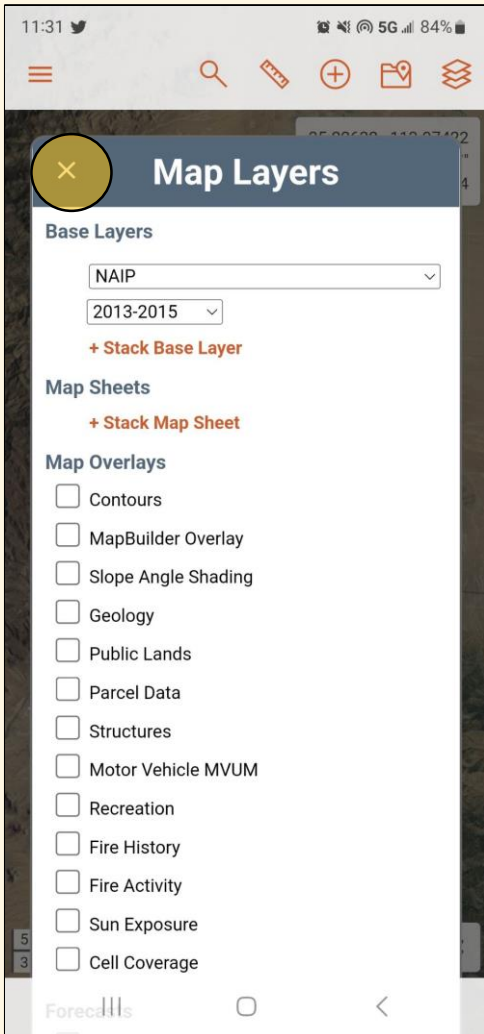
Map Data



- Shows the different data on the map
- For large searches or extended searches, Operational Periods will be formed that can be toggled on and off to reduce the “clutter” on the map.



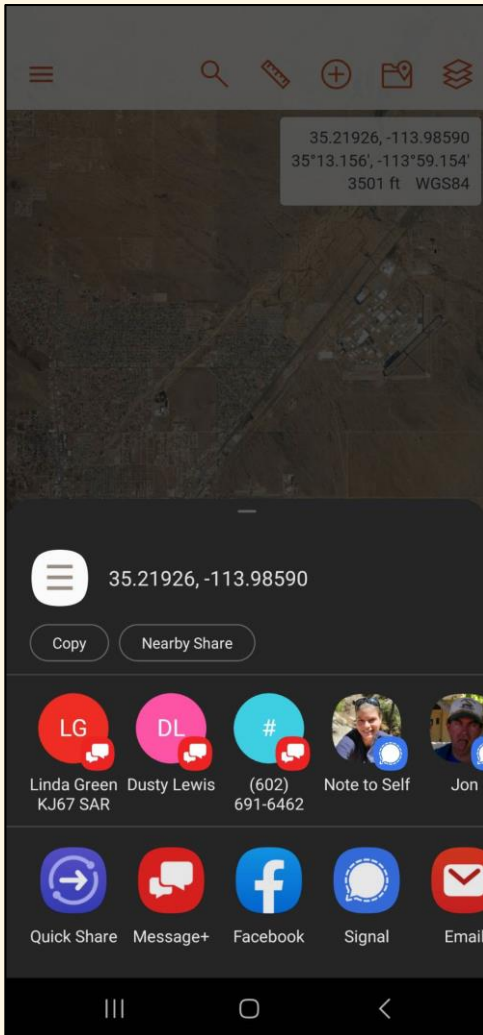
Layers



- Lots of customization options with layers
- Some can be downloaded to work in areas where there is no cellular service
- Some layers have transparency settings
- Some layers contain “live data”



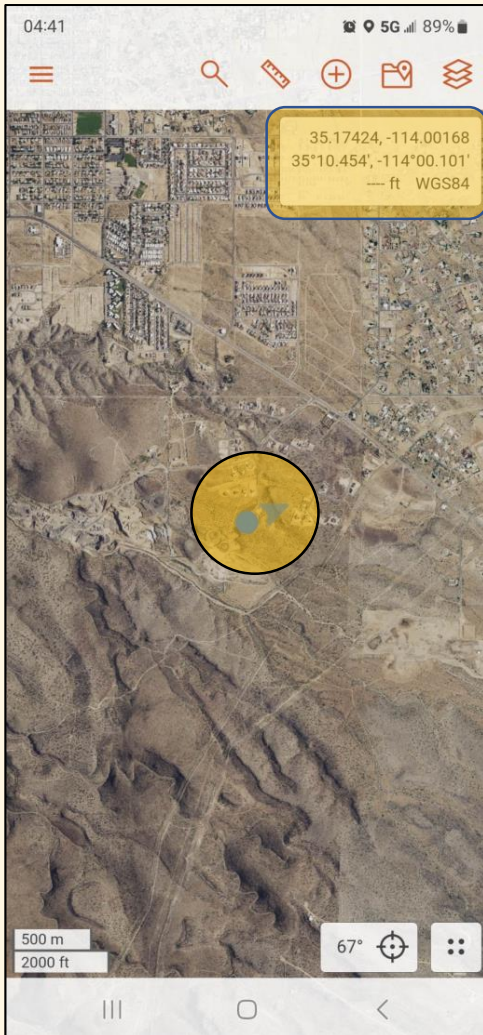
Coordinates



- Crosshair indicates location of coordinates
- The closer zoomed in, more accurate location
- Displayed formats are controlled in “Display” menu
- Can copy and paste coordinates into text messages, etc



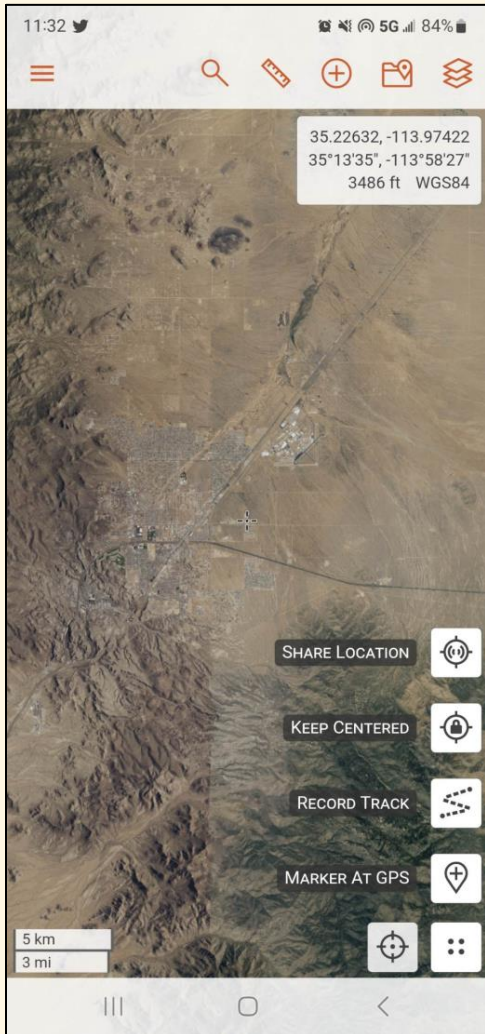
Current Location



- Centers crosshairs to current location
- Crosshair indicates location of coordinates
- The closer zoomed in, more accurate location



Sharing and Tracking



- Sharing location
- Recording tracks



Course Outline

- Introduction
- **Sharing**
- Tracking
- Markers
- Layers
- Downloading Layers
- Map Sheets
- Practice Maps

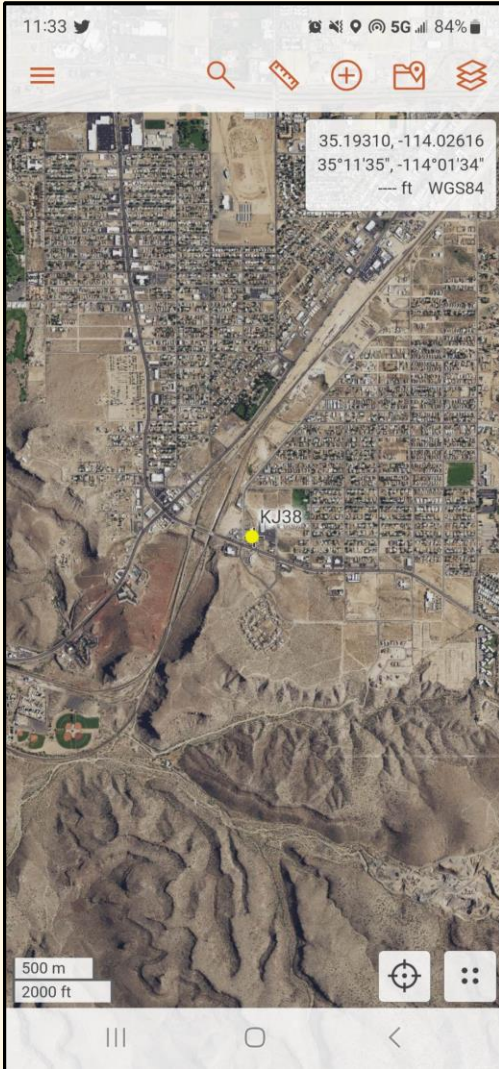


Sharing

- Only Team members can see your location
- Start sharing when leaving your house
- Stop sharing when you get home
- Make sure your name is your unit ID
- Sharing helps Command to build team assignments as the search begins
- Operational or tactical redeployment of resources



Start Sharing



- Use your Unit ID
- Use a visible color (not grey)
- Location is shared as long as there is cell service



Stop Sharing



- When sharing is stopped, the marker will no longer update
- It will remain colored for 10 minutes at its last location
- Then it will turn grey for another 20 minutes at the last location
- Then it will completely disappear



Course Outline

- Introduction
- Sharing
- **Tracking**
- Markers
- Layers
- Downloading Layers
- Map Sheets
- Practice Maps

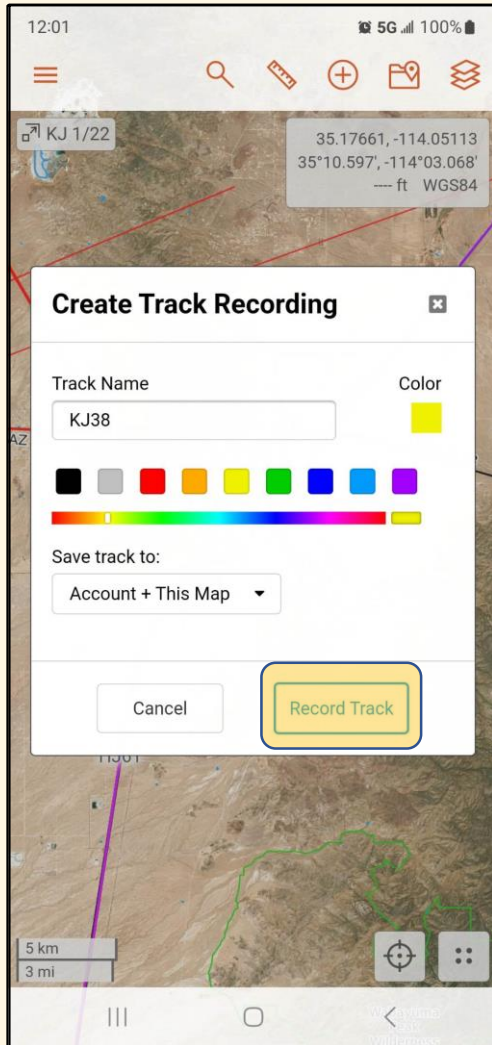


Tracking

- Start tracking once you have an assignment
- You need to have the Team map open
- With multiple assignments, you may be asked to end a track and start a new track
- Make sure your name is your unit ID
- The color of your track may change – do not worry about that



Start Tracking



- Make sure to have a map open
- Use your Unit ID
- Track color may be changed by Command
- Make sure it saves the track to “Account + This Map”



Tracking



- An active track stands out
- The track color may be changed by Command
- Once track is finished, it stops updating on the map
- Your shared location will continue to update



Stop Tracking



- Stop tracking at the end of an assignment and before you go home
- If you need to edit your track (Unit ID), that can be done before finishing the track
- Be sure to “Save” the track
- If the track was made by mistake, it can be discarded



Course Outline

- Introduction
- Sharing
- Tracking
- **Markers**
- Layers
- Downloading Layers
- Map Sheets
- Practice Maps

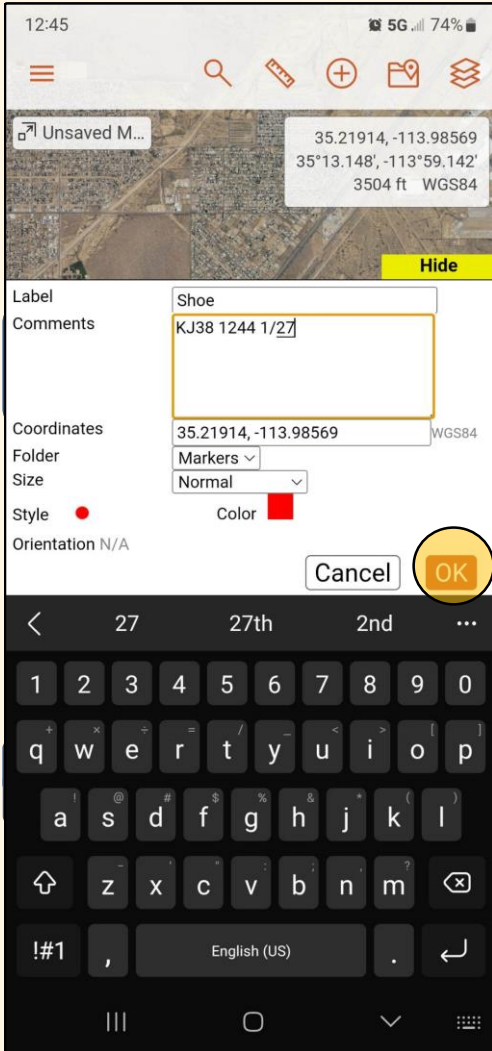


Markers

- Keep the “label” of the marker – BRIEF (one to two words)
- Use the comment field for details and include
 - Unit ID
 - Time
 - Any pertinent details or description
- How to plot them
 - Click on map
 - Put marker at GPS
- How to change the icon and color



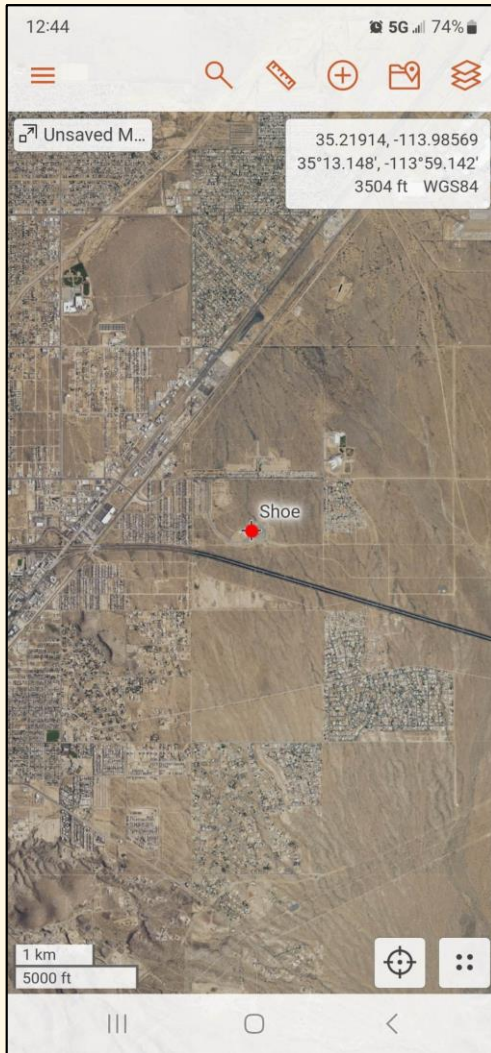
Markers



- Keep the label “**BRIEF**”
- Use “Comments for the details
 - Unit ID
 - Time
 - Any pertinent information
- Change style or color, as needed



Markers

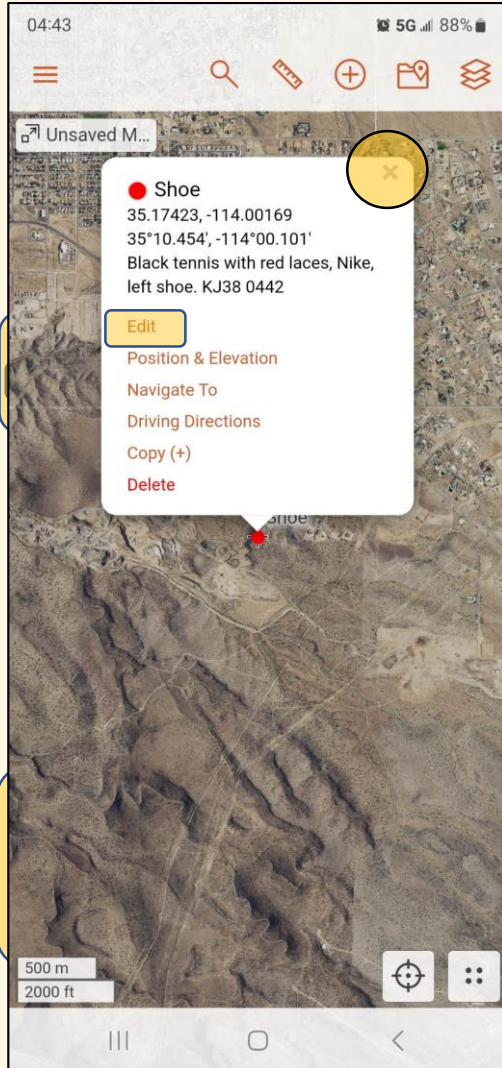


- Markers are viewed under “Map Items”
- Markers can be edited

Keep the Label “BRIEF”!



Markers



- Markers are viewed under “Map Items”
- Markers can be edited

Keep the Label “BRIEF”!



Course Outline

- Introduction
- Sharing
- Tracking
- Markers
- **Layers**
- Downloading Layers
- Map Sheets
- Practice Maps

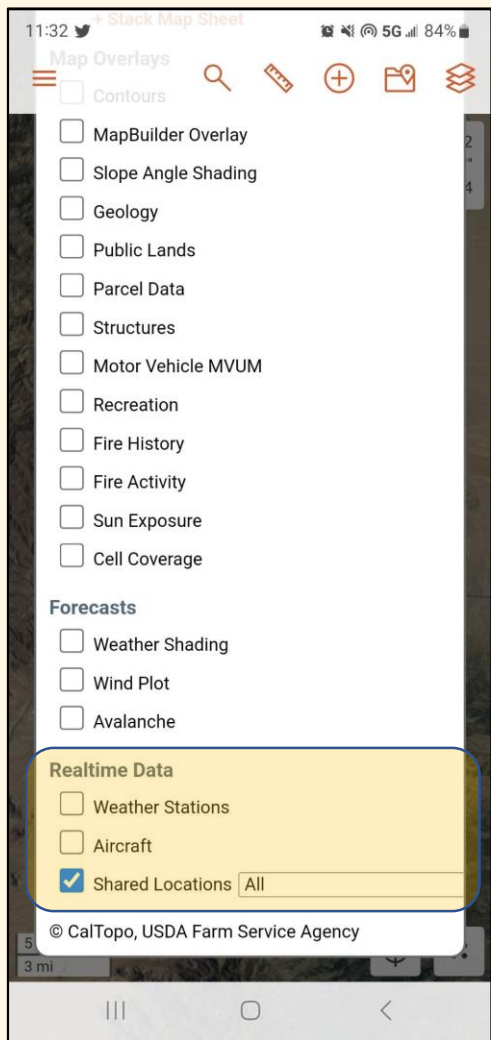


Layers

- Search maps have default layers that can be changed
- Multiple layers can be stacked
- Transparency option
- Some layers are “real time” data
 - Aircraft
 - Shared locations
 - Weather stations



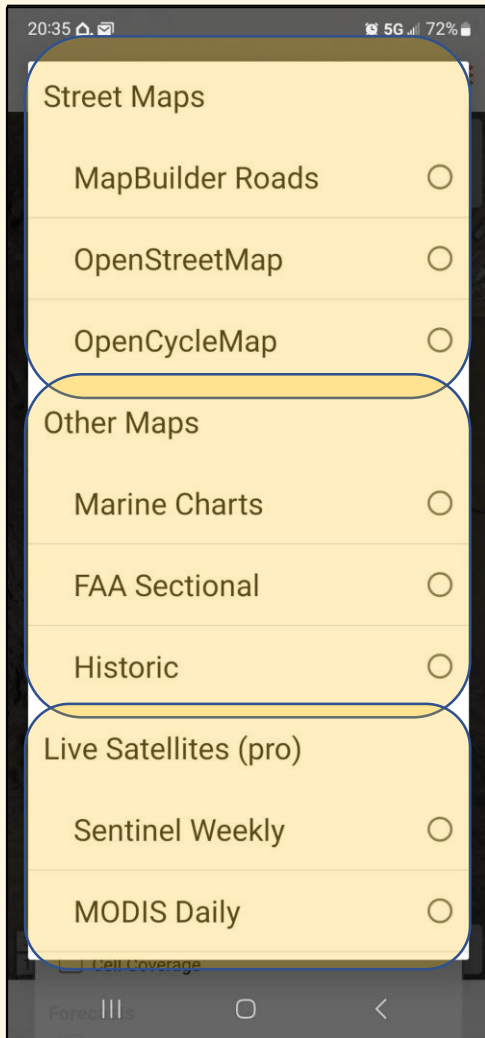
Layers



- Layers provide a way to customize the map
- The changes you make do not affect others
- When you reload a map, you may have to reset your layers from the map's default



Base Layers



- Some of these layers can be downloaded to use offline



Stacking Layers



- Stacking layers can be useful to show additional information on top of an existing layer
- Ex – Satellite as a background and putting roads over it



Course Outline

- Introduction
- Sharing
- Tracking
- Markers
- Layers
- **Downloading Layers**
- Map Sheets
- Practice Maps

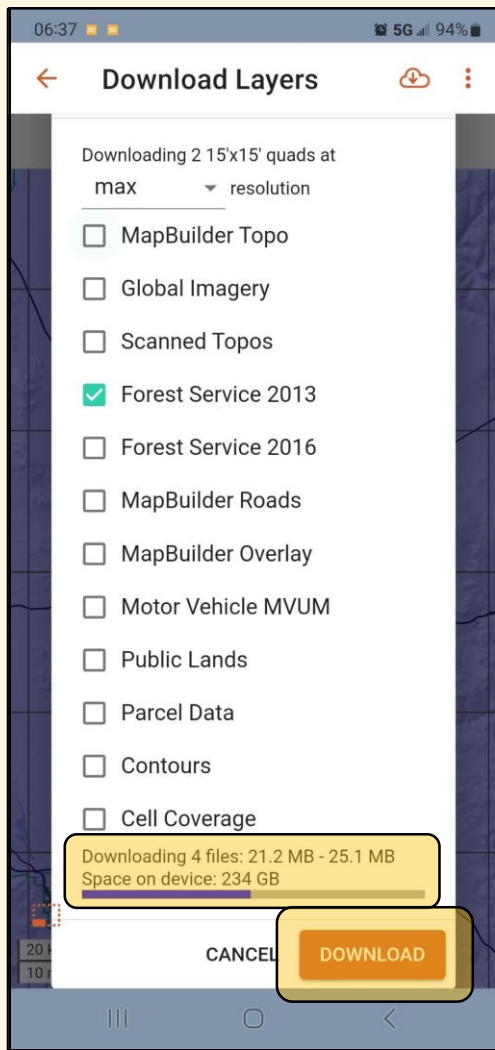


Downloading Layers

- Important to download layers for areas you are assigned to that lack cellular coverage
- Does not transfer to new devices, requiring downloading again
- Takes up quite a bit of storage space
- Download at least your geographical area, but best to download the entire county
- Use a good Wi-Fi connection



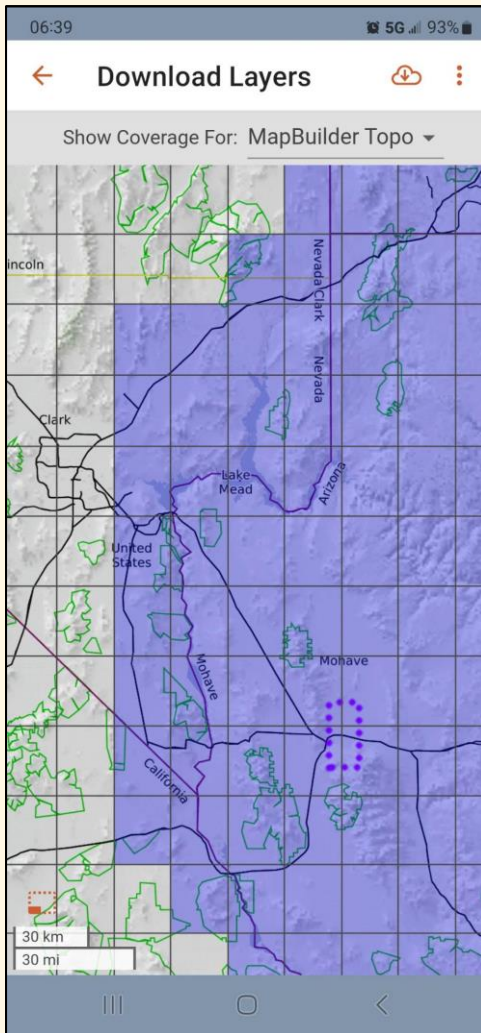
Downloading Layers



- Consider downloading at least satellite and roads
- Preferred:
 - MapBuilder Topo
 - Global Imagery
 - MapBuilder Roads
 - MapBuilder Overlay



Downloading Layers



- Showing coverage allows you to see what you have downloaded and in which resolution format
- Helps to see lacking coverage



Course Outline

- Introduction
- Sharing
- Tracking
- Markers
- Layers
- Downloading Layers
- **Map Sheets**
- Practice Maps

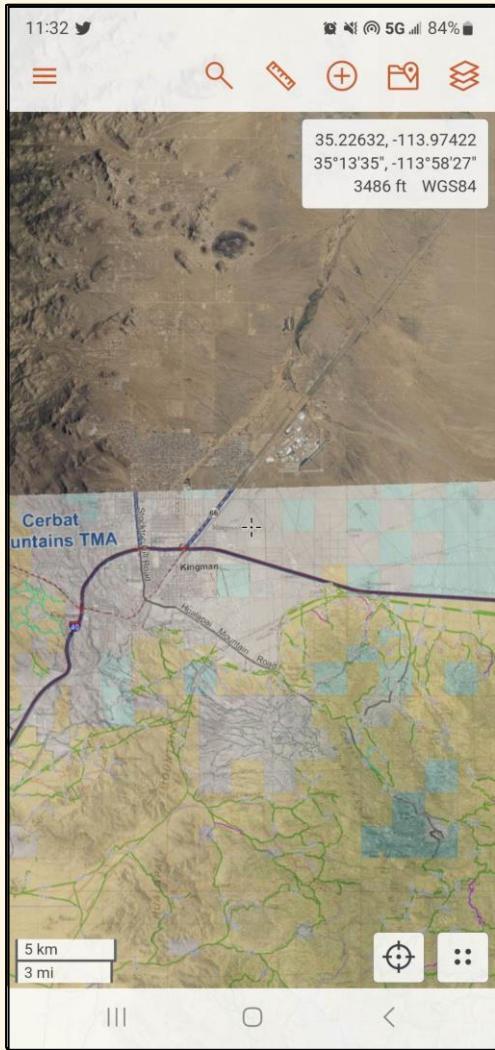


Map Sheets

- Downloadable layers that can be overlaid on top of layers
- BLM maps
- SAR created maps



Viewing Map Sheets





Downloading Map Sheets





Course Outline

- Introduction
- Sharing
- Tracking
- Markers
- Layers
- Downloading Layers
- Map Sheets
- **Practice Maps**



Practice Maps

- Open Map “Advanced Academy 2/4”
- Share location
- Enter coordinate provided as a marker
- Start tracking
- Locate marker
- Contact Command
- Update marker based on what is found, if anything



SAR Topo

Questions???