



RADIOS

Introduction

October 2023



Radios (Mobiles and Handhelds)

Mobile and handheld radios are key components that are used during searches and rescues. It is important to know how to use each of these radios.





Radios (Mobiles and Handhelds)

Due to the size of Mohave County, there are several different channels that may be used – depending on the area of operation.

Channels 1 through 11, 13 and 15 are area specific channels

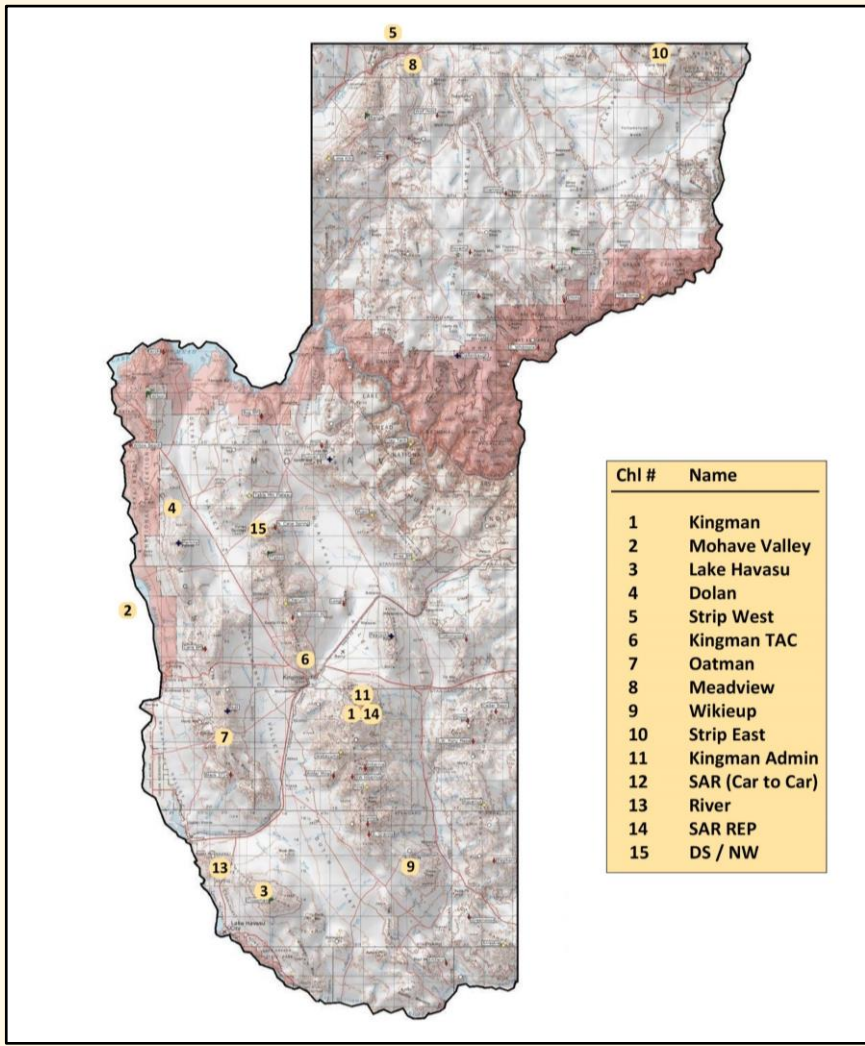
Channel 12 is the State SAR channel.

Channel 14 uses the State SAR frequency and is repeated in the Kingman area.

Channel 16 uses VFIRE21 (mutual aid)



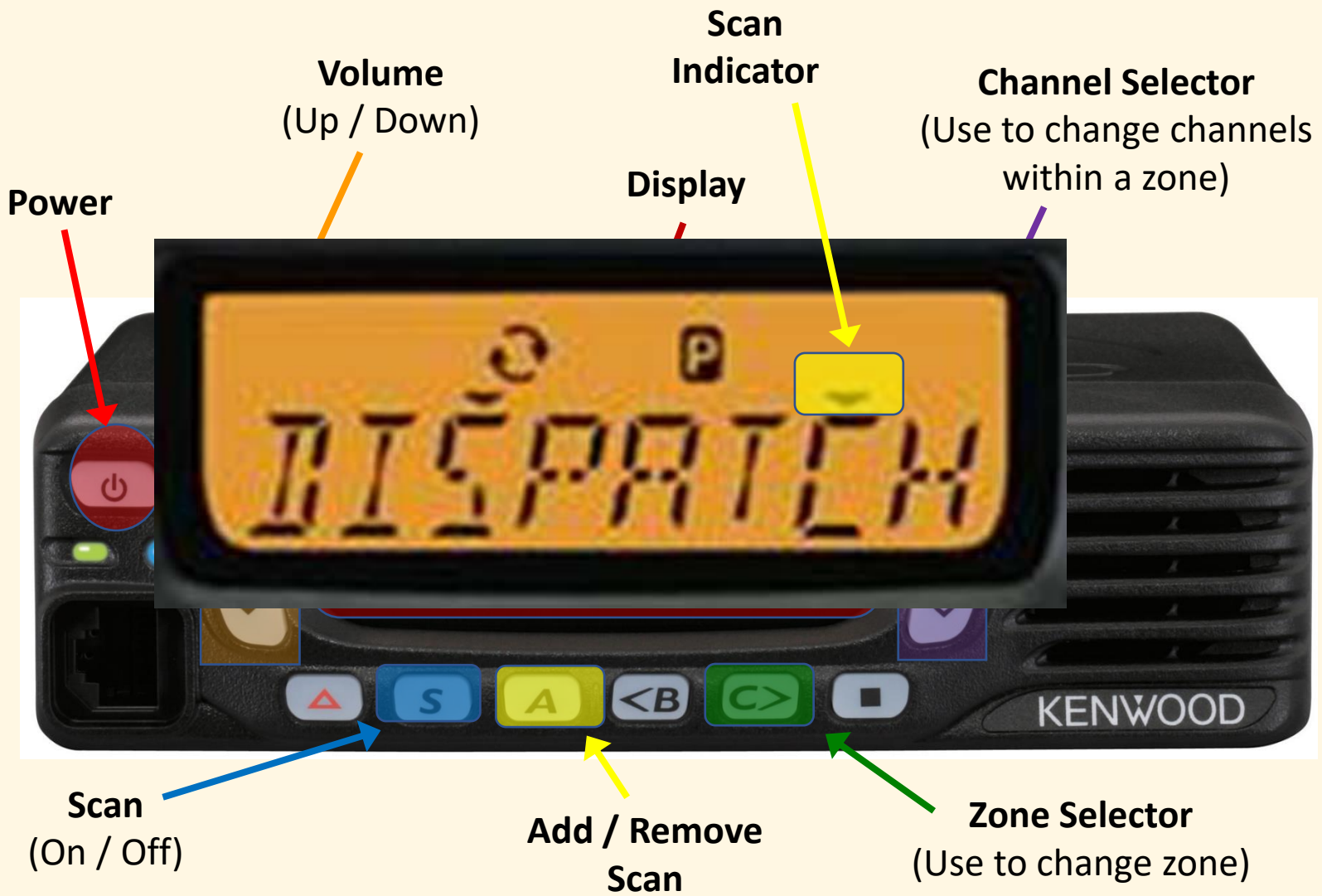
Radio Service Areas



- 1 – Kingman
- 2 – Mohave Valley
- 3 – Lake Havasu City
- 4 – Dolan Springs
- 5 – AZ Strip West
- 6 – Private Channel
- 7 – Oatman
- 8 – Meadview
- 9 – Wikieup
- 10 – AZ Strip East
- 11 – Kingman LE
- 12 – SAR
- 13 – River
- 14 – SAR Repeater
- 15 – Dolan / Northwest



Mobile Radios: Operations





Handheld Radios

Handheld radios generally transmit 5 watts.

These radios are used away from the vehicles and transmit a shorter-range than the mobile radios.

Sometimes, we will set people at certain points in a search area to serve as a radio relay.

Most unit radios currently are now Tera-590 or Baofeng version using VHF and UHF frequencies.

It is important that to understand how to use your radio!



Handheld Radios: Operations



Keep the antenna in the up position. The antenna works best when perpendicular to the ground.

Hold the transmit button for one second before talking. This allows the repeater to open up and the party on the other end to hear the entire transmission.

Keep out of the water (keep in mind when crossing running washes / swift water rescues).



Handheld Radios: Contents



Antenna

Battery

Belt Clip
with Screws

Wall Charger

Radio



Assessoris

Longer Antenna



A long antenna may get in the way of personal gear

Microphone



There is a time and place for these, but it is not always practical

Various Radio Harnesses



However the radio is carried, **ENSURE it will not key up by accident!!**



Handheld Radios: Operations





Handheld Radios: Change Channel



Channel Selector
(Turn either direction to change channel)

Current Channel

Up / Down
(Use to change channel)

Keypad
(Enter channel number)

Channel Name Changes
(Radio will automatically relock after a few seconds of inactivity)

Unlock Radio
(Press and hold until the "lock" disappears)



Handheld Radios: Two Channels

These radios have a dual channel capability.

They are set to single channel display.

DO NOT change this setting!!

Active Channel
(Active Channel Peak)
(Keys up to Speak)



If there are two channels, it is critical to make sure you key up on the correct channel.

A/B EXIT Button
(Use to change active channel to top or bottom)

Unlock Radio
(Press and hold until the "lock" disappears)



Handheld Radios: Maintenance

Make sure the antenna is secured/tightened before powering up.

After every use, recharge the batteries.

Charge the batteries at least once a month, when not in use.

Make sure you have two batteries and that you bring the second battery with you when you go into the field.



Handheld Radios: Etiquette

Make sure you are on the right channel before speaking.

Pay attention to other radio traffic and try not to interfere in active traffic.

Be patient for a response – as there could be other priorities at Command.

If no response, ask another Unit to Relay your traffic.



Handheld Radios: Training

There are many more features these radios will provide that are not part of today's training.

Being able to effectively and quickly use your radio may save your life!!

Practice – Practice – Practice!!!



Radios (Mobiles and Handhelds)

There is a user's guide available for download.

Questions??

